

DRC

PZ23-12000026

12/04/2024

REVISIONS

TOWNHOUSES AT NW 19 AVE

MIAMI  
ARCHITECT  
INC.  
7755 SW 117 ST. MIAMI, FL 33156  
TEL: (305) 254-1720  
LA 28000671

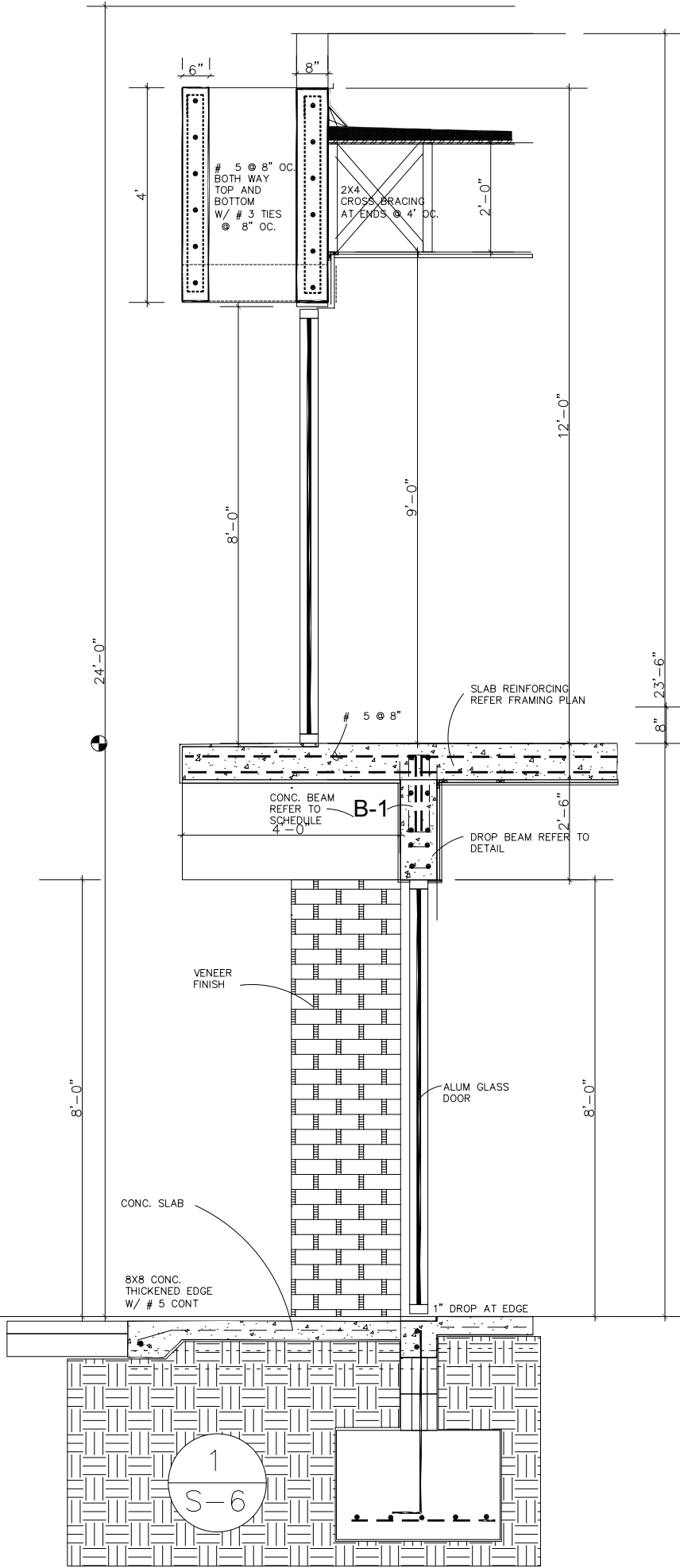
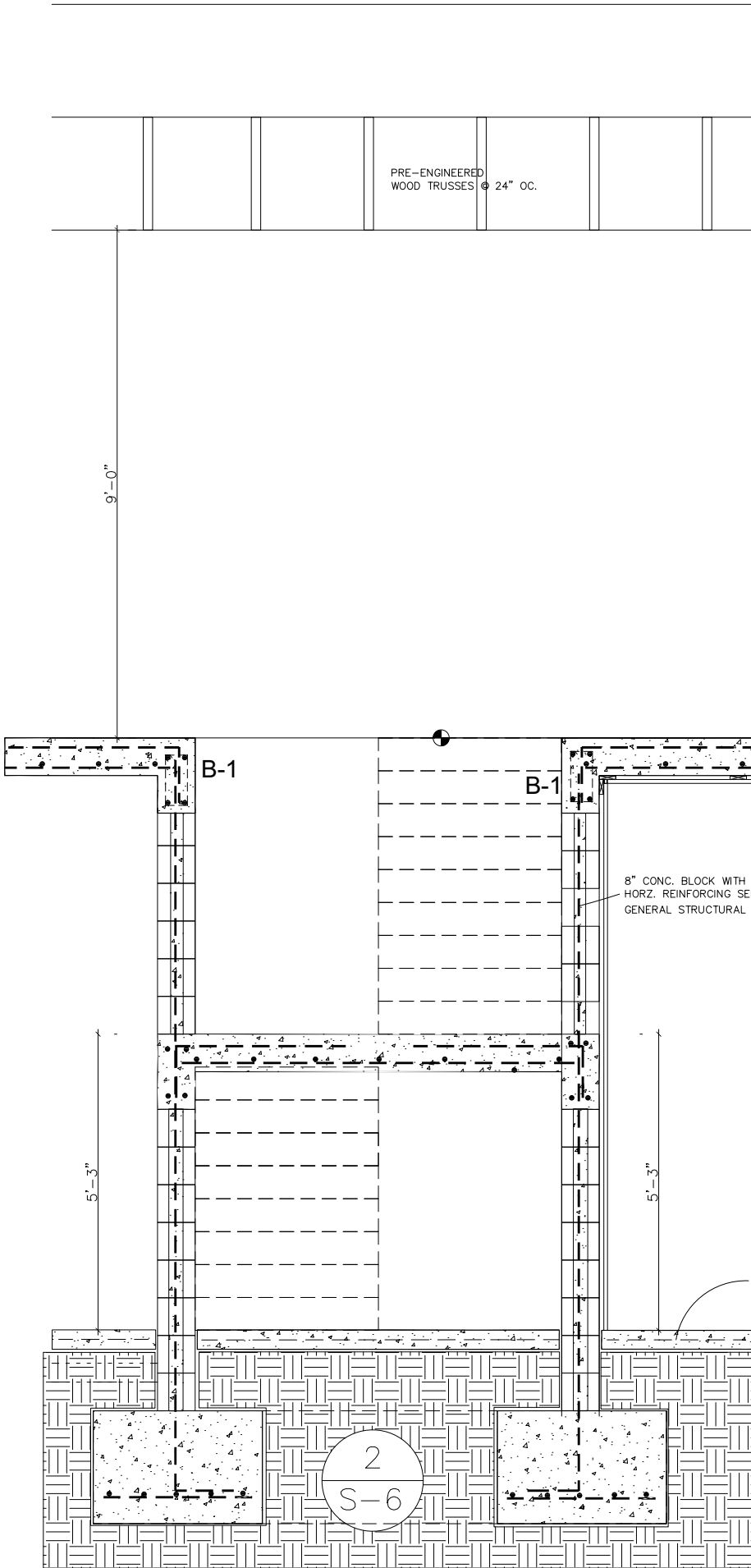
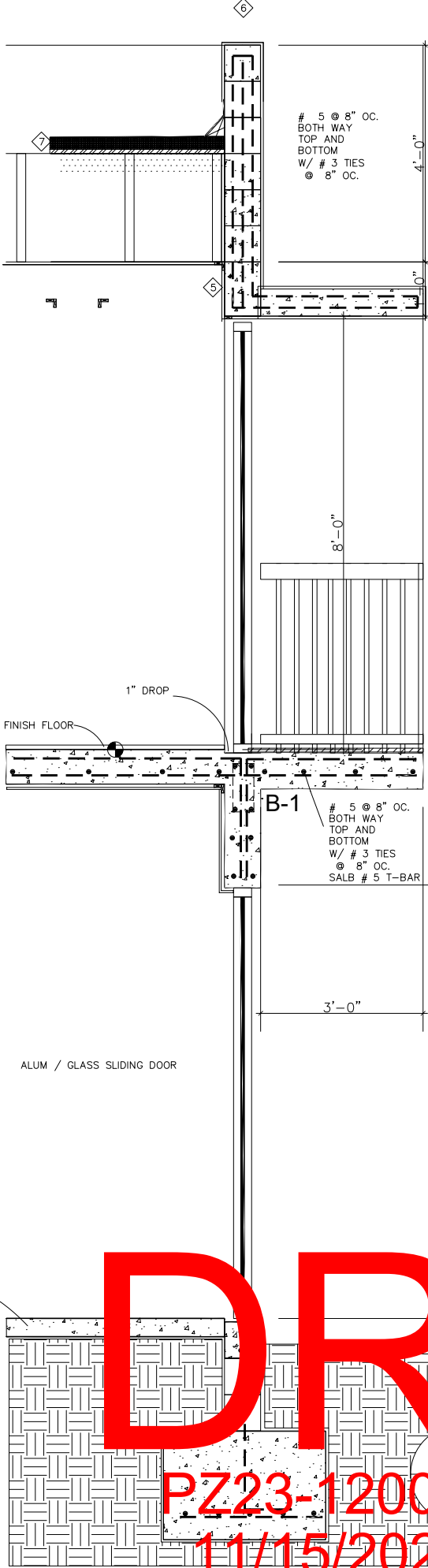
Taghi Afkham  
am  
Digitally signed  
by Taghi Afkham  
Date: 2023.07.27  
20:16:37 -04'00'

Digitally signed  
by Taghi Afkham  
Date: 2023.07.27  
20:16:37 -04'00'

Taghi Afkham  
STATE OF FLORIDA  
ARCHITECT  
AR0014758  
DATE: 03/20/2023

S-6

- 1 8X8 CONC. CAP W/  
2#5 CONT. @ 3 TIES @ 2'  
OC.
- 2 (2) 2X8 PT. LEDGER W/  
1/4 X 10" LONG EXP. BOLTS  
STAGGERED @ 24" OC. 3"  
FROM EDGE
- 3 JOIST HANGER  
REFER TO CONNECTION  
SCHEDULE ABOVE #1
- 4 1"x4" P.T. CONT. NAILER
- 5 1X4 CONT. FIRE-STOP  
(TYP.) SEE FIRE STOPPING
- 6 #5 IN FILLED CONC. CELLS  
@ MAX. OF 32" REFER TO  
PLAN FOR VARIOUS CONDITIONS.
- 7 SINGLE PLY ROOFING ON  
SLOPED BOARD INSULATION
- 8 5/8" PLY-WD ROOF  
SHEATHING
- 9 R-19 SPRAY ON INSULATION
- 10 PRE-ENGINEERED  
WOOD TRUSSES @ 24" OC.
- 11 2X4 HORIZONTAL BRACING  
@ 4'-0" OC. (TOP&BOT)
- 12 1X3 FURRING @ 24" OC.
- 13 5/8" DRYWALL CEILING ON 1X3  
FURRING @ 2'-0" OC.
- 14 3/4" CAVITY INSULATION (R-5)  
(TYP. @ ALL EXTERIOR WALLS)
- 15 5/8" MIN. SMOOTH STUCCO FINISH
- 16 1" X 6" P.T. CONT.  
NAILER (TYP.)
- 17 3/4" X 6" BASEBOARD  
(SEE FINISH SCHEDULE)
- 18 8" CONC. BLOCK WITH  
HORZ. REINFORCING SEE  
GENERAL STRUCTURAL NOTES
- 19 4" CONC. SLAB REINF  
W/6X6-W20XW20 WWF  
OVER 6 MIL VAPOR BARRIER  
ON WELL COMPACTED FILLED
- 20 FLOOR SLAB:  
8" CONC. SLAB REINFORCED  
AS SHOWN ON THE PLANS  
W # 4 @ 12"  
TEMPERATURE STEEL  
PERPENDICULAR TO  
MAIN REINFORCEMENT.



DRC  
PZ23-12000026  
11/15/2023